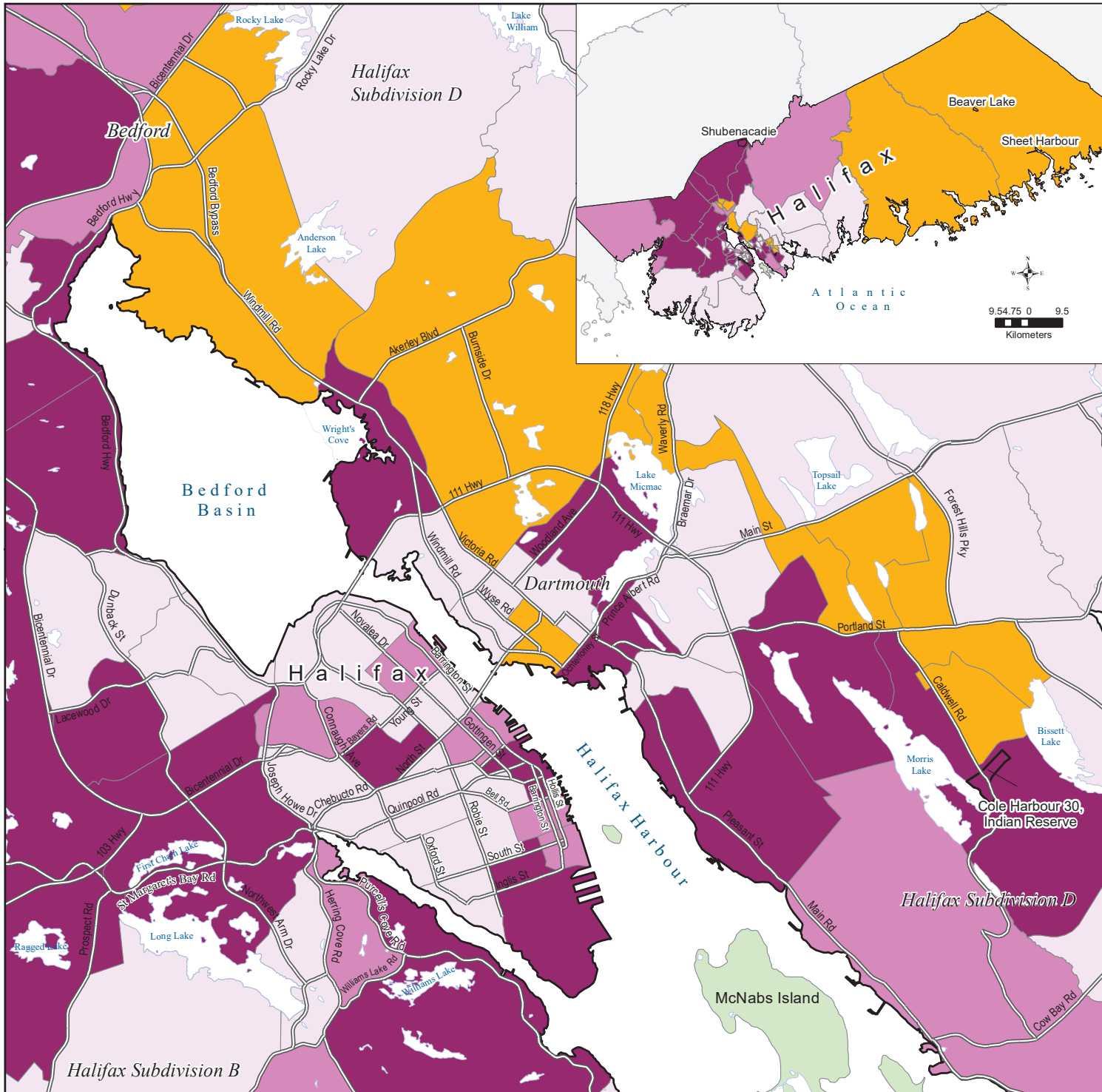


# Population Change, Halifax Census Metropolitan Area, 2006–2016



## Percentage Change in Census Tract Population, 2006–2016

- Increase of 10% or More (25 CTs, 28% of the CMA)
- Increase of 5% to 9.9% (14 CTs, 16% of the CMA)
- No Change or Less than 5% Change (35 CTs, 39% of CMA)
- Decrease of 5% or More (15 CTs, 17% of the CMA)

Change calculated for 2006 CT boundaries.

**Halifax CMA Population**  
 2006 = 372,858  
 2016 = 403,390  
 Change = 8% Increase

- Municipalities or Equivalent (2006)
- Not Part of the CMA in 2006
- Highways and Major Roads (2016)
- Lakes
- Non-residential Islands

*Cole Harbour 30* Name of Municipality or Equivalent (2006)  
*Dartmouth* Name of Former Municipality (1996)

Source:  
 Statistics Canada,  
 Census 2006 and 2016

